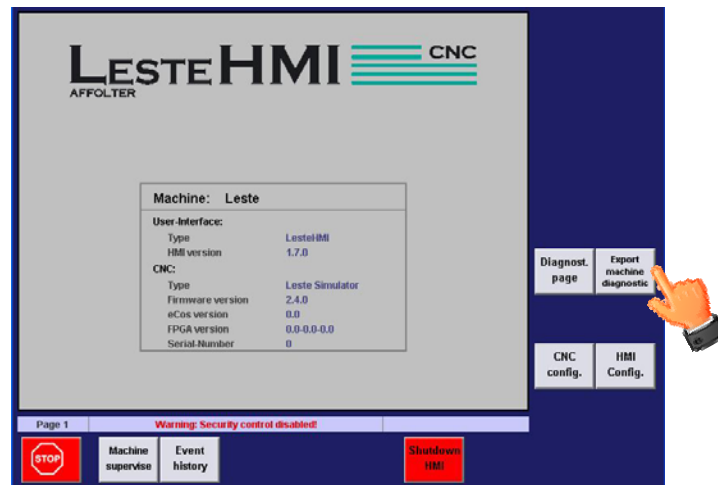


## Instruction for Diagnostic-Export on Affolter CNC-Controls

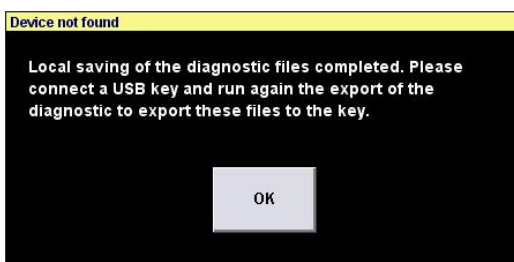
If problems appear with using the CNC-Control, it is possible to save the current status of the CNC and to send it to your service-partner for diagnostic. The following procedure should be performed as soon as possible after the problem occurs:

1. If you don't have a USB-Stick go to point 4.
2. Plug the USB-stick to the HMI (control panel = **H**uman **M**achine **I**nterface).
3. Wait for approx. 5-10 seconds until the HMI has recognized the USB-stick.
4. Go back to the main page of the HMI.
5. Press on the button « export machine diagnostic ».



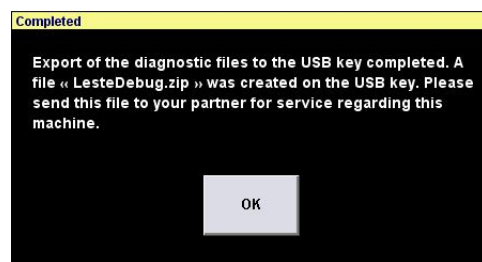
6. A dialog field informs about the process status. Wait until it is finished.
7. When the process is finished:

a) If you don't have a USB-stick plugged, the following message is displayed:



As soon as you have a USB-Stick go back to 2.

b) If you have a USB-stick plugged, the following message is displayed:



If you have a USB-Stick plugged and the message under 7.a) is displayed, then the stick was not correctly recognized by the HMI. Go back to 4.

8. Disconnect the USB-stick and plug it to your computer.
9. Send the file « LesteDebug.zip » per e-mail to your service-partner.